

Digital Solutions

GEA launches real-time monitoring solution for food processing technology at Anuga FoodTec

Düsseldorf (Germany), March 12, 2024 – GEA, a global leader in engineering solutions for the food, beverage, and pharmaceutical industries, is launching a new cloud-based web application for food processing and packaging lines at the Anuga FoodTec trade show, taking place in Cologne, Germany, from March 19 to 22, 2024. GEA InsightPartner for the food processing industry is the latest addition to its digital product family and uses machine data to provide flexible responses to production challenges.

GEA InsightPartner is designed to support all food processing and packaging plants in achieving key production goals: maximize machine availability, minimize downtime, prevent unplanned shutdowns, and manage resources efficiently. This service enhances efficiency and productivity, reduces costs, and lowers the Total Cost of Ownership for plant equipment. By providing immediate access to historic and real-time equipment data, InsightPartner enables better production management through advanced analytics and insights from continuous monitoring. It helps identify performance improvements and extend asset longevity.

Digital innovations are transforming the food industry, enabling it to increase production while reducing energy consumption and waste. GEA supports customers with its high-performance systems, advanced sensor technologies, cloud connectivity and sophisticated analytics to help them produce more efficiently and achieve their ambitious sustainability goals.

Key Features of GEA InsightPartner at a glance:

- **Data-Driven Decision-Making:** Facilitates optimal machine utilization through immediate, 24/7 access to live information.
- **Maintenance and Troubleshooting Support:** Aids in maintenance planning and execution, minimizing downtime and allowing for quick fault identification and resolution.
- **Tracking relevant KPIs:** Maintains an optimal production level through collected data.

User-Friendly Data Access and Real-Time Monitoring

The web application offers a user-friendly interface, allowing technical and operations managers to access historic and real time machine data. This capability ensures that performance can be tracked against key performance indicators (KPIs), promoting an optimization of productivity. The system also alerts to maintenance needs and uses trend analysis to prevent potential downtime.

Solution provides detailed performance monitoring

InsightPartner simplifies the troubleshooting process, dramatically reducing the time it takes to diagnose and resolve problems. This improvement directly contributes to enhanced maintenance efficiency and reduced production downtime. Its comprehensive monitoring dashboards provide a detailed view of equipment operation, helping users preemptively tackle potential issues.

GEA offers comprehensive digital product family

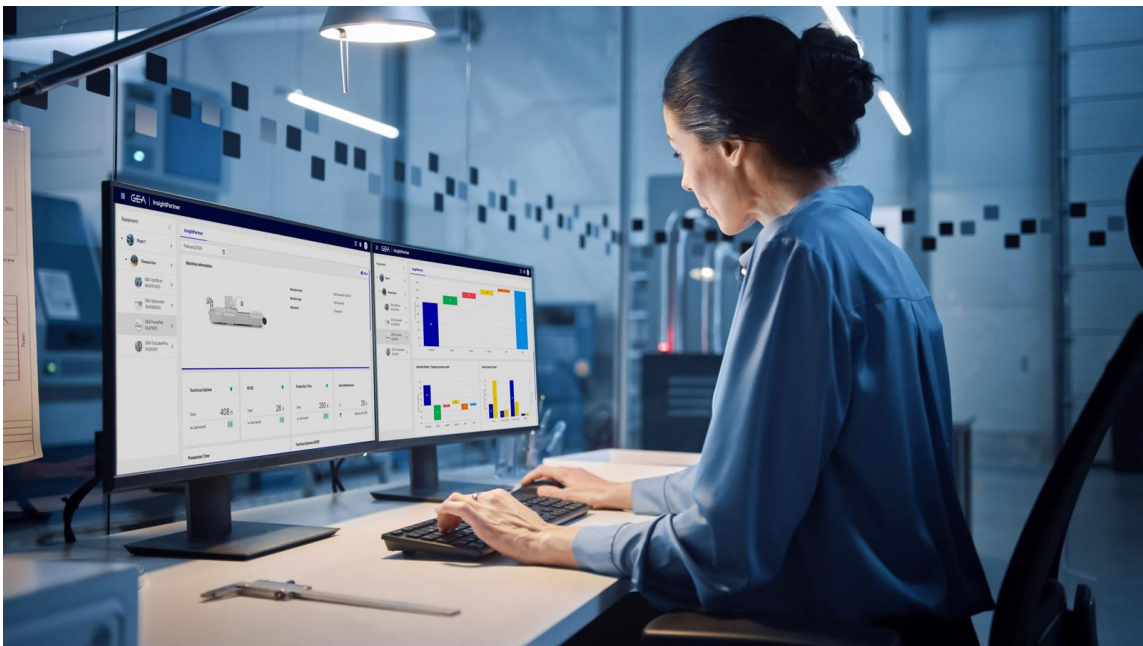
GEA's suite of digital solutions, including InsightPartner, RemotePartner, and the GEA Cloud®, represents a holistic approach to supporting equipment throughout its lifecycle. These offerings prioritize security and transparency, ensuring that data is securely stored and analyzed.

Retrofit existing machines or order with new machinery

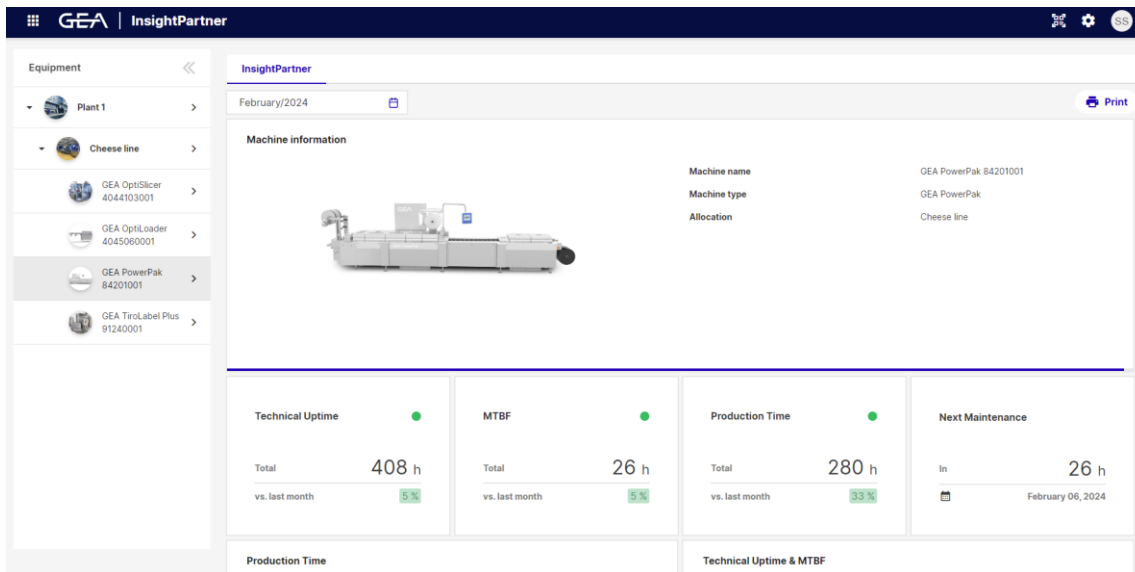
InsightPartner is available for a wide range of new GEA food processing and packaging machines and can be retrofitted to existing equipment. It is part of GEA's Service Agreements program, which combines various service products for added value. The "Starter Package" for new machines integrates InsightPartner as a foundational element, providing customers with advanced analytics, improved KPI transparency, and proactive maintenance recommendations.

[gea.com](https://www.gea.com)

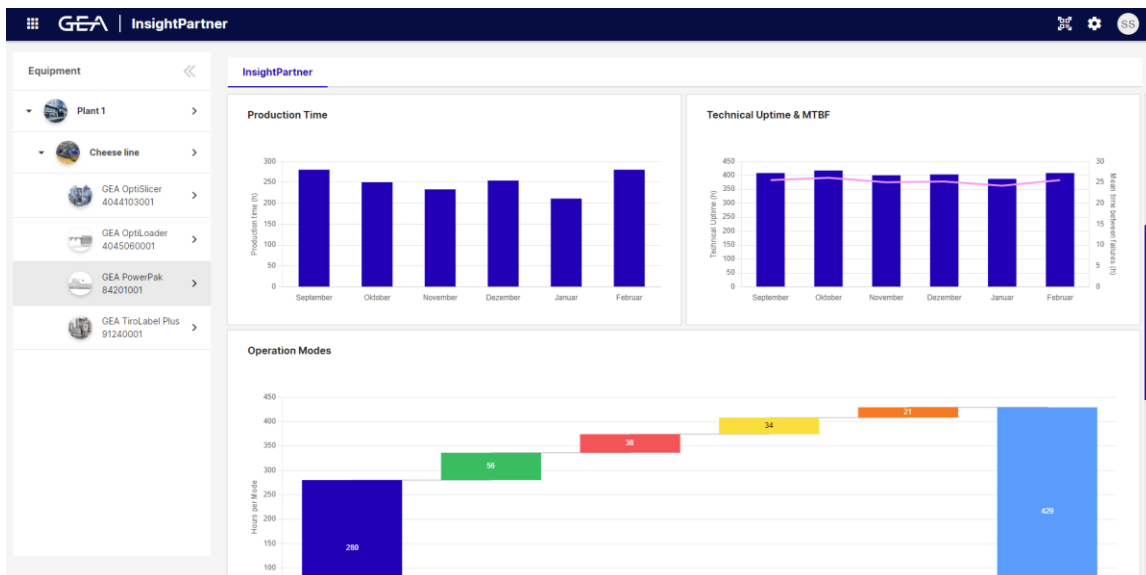
Picture Overview ([Download link for high resolution versions of 3 pictures](#))



Pic. 1: GEA InsightPartner helps food processors manage their production better. The cloud-based solution provides advanced analytics and comprehensive insights based on continuous data monitoring. It analyzes equipment performance and reveals unused potential and can increase the longevity of the assets. Source: GEA



Pic 2: GEA InsightPartner presents all relevant data at a glance and shows the machine key performance indicators using traffic lights. This clear display allows users to spot anomalies instantly, identify what’s wrong and take immediate remedial action. The information helps to prevent costly machine downtime, so operations keep running at peak performance around the clock.
Source: GEA



Pic 3: This dashboard of GEA InsightPartner presents a comprehensive overview of the operation of your connected equipment and allows customers to easily monitor and track key performance indicators. The insights can be used to optimize productivity.
Source: GEA

NOTES TO THE EDITORS

- Further **information** about GEA
- Further **information** about GEA InsightPartner
- To the GEA **Media Library**
- Overview **press events**
- Follow GEA on [in](#) [t](#) [v](#)

Media Relations

GEA Group Aktiengesellschaft
Nicole Meierotto
Peter-Müller-Str. 12, 40468 Düsseldorf, Germany
Phone +49 211 9136-1503
nicole.meierotto@gea.com

About GEA

GEA is one of the world's largest suppliers of systems and components to the food, beverage and pharmaceutical industries. The international technology group, founded in 1881, focuses on machinery and plants, as well as advanced process technology, components and comprehensive services. With more than 18,000 employees, the group generated revenues of about EUR 5.4 billion in more than 150 countries in the 2023 fiscal year. GEA plants, processes, components and services enhance the efficiency and sustainability of customer's production. They contribute significantly to the reduction of CO₂ emissions, plastic usage and food waste. In doing so, GEA makes a key contribution toward a sustainable future, in line with the company's purpose: "Engineering for a better world".

GEA is listed on the German MDAX the European STOXX® Europe 600 Index and is among the companies comprising the DAX 50 ESG, MSCI Global Sustainability as well as Dow Jones Sustainability World and Dow Jones Sustainability Europe Indices.

More information can be found online at [gea.com](https://www.gea.com).

If you do not want to receive any further information from GEA, please send an e-mail to pr@gea.com.